

Scott County Administration
Purchasing Division
600 West Fourth Street, Davenport, Iowa 52801-1030

REQUEST FOR QUOTATION
Scott County Requisition No. **19507**
Bidders need to complete and submit this form.

Submission Date 3/19/2020	10:00 a.m.
----------------------------------	-------------------

Qty	Description
1	Motorgrader-2020 or newer, with a
	Trade-in of a John Deere 770D
	Specifications attached (pages 1-9)
	To be delivered July 1, 2020 or after.
	Submit responses to www.publicpurchase.com
	Please register at www.publicpurchase.com
	price quotation good for 60 days
	Delivery Included
	From time to time it may be necessary to change or modify a request for purchase. If you have received this request from any other source other than direct fax or email from Scott County, it is your responsibility to check for updates and/or changes to the request. If you would like to receive automatic updates please register your company in our vendor data base by using our website, www.scottcountyiowa.com

Scott County reserves the right to accept the bid from the lowest responsible bidder.

Quote submitted by:

Released by:
(Scott County Use Only)

Name

Date: 2/27/2020

Time: 10:00 a.m.

Title

Company

Date

PLEASE NOTE:
Bidders must provide an estimated delivery date in their bid response!

Company Contact Information:	Phone:
	E-Mail:

“By virtue of statutory authority, a preference will be given to products and provisions grown and coal produced within the State of Iowa.”



Scott County of Iowa

February 26, 2020

Page 1 of 9

One 2020 or newer Caterpillar 140M3 with front wheel assist or John Deere 772G Motor Grader with front wheel assist with trade of:

Year	Make	Model	Color	VIN #	Hrs
2008	John Deere	770D	Yellow	DW770D623383	8,520.0

SPECIFICATIONS

Quotations will be received on a Cat 140M3 with front wheel assist or John Deere 772G Motor Grader with front wheel assist and a 12 foot Balderson style (or approved equal) hydraulic snow wing, grader shall be equipped with Henke quick attach front lift group with positive down pressure and float furnished with all controls, ready for use.

WEIGHT

Basic operating weight 36,000 lbs. - min.

MOLDBOARD

Hydraulic Side Shift & tilt (14'x 27"x 1") with One (1) 2 ft. extension on left side. Blade float, with extended wear inserts on circle and blade. 8" x ¾" x 8' cutting edge with ¾" hardware.

ENGINE

9.0L EPA Tier 4 Final Turbo charged diesel engine 170-272 variable H.P. Full flow oil and fuel filters and heat exchanger oil cooler. Electric engine monitoring system. Pre-cleaner that won't plug in snow. Hand throttle plus floor operated accelerator. Plug-in 120V engine heater & low temperature starting system. Fuel line filter and water separator.

TRANSMISSION

Power shift transmission, 8 speed forward and 6 speed reverse with auto shift.

ELECTRICAL SYSTEM

24 volt system. 150 amp, heavy duty (Delco) alternator. Heavy duty low maintenance batteries 1400 CCA. Gauges in cab for: temperature, oil pressure, amp meter, tachometer, fuel and hydraulic. 24V to 12V 30amp Converter with 2 power ports.

LIGHTS

LED grading lights. Adjustable raised front lights for v-plow. LED strobe light mount on top of cab.

CAB

Deluxe sound suppressed, insulated, tinted safety plate glass, **Short cab.** Deluxe suspension air ride, adjustable full cushion seat with swing up-down arm rest. Large cab heater with dual fan, front and rear window defrosters. Heavy duty front and rear window wipers. Wipers



for lower front windows. Heated left and right outside mirrors, inside rear-view mirror. Left and right side steps and grab handles. Factory installed cab air conditioner with fan. Articulation indicator with automatic return to center. Seat belt. AM-FM radio w/weather band & bluetooth. CB radio installed. Electric rear window defroster. Slope meter. Rear camera view. HVAC powered pre-cleaner

HYDRAULIC SYSTEM

System to power blade controls, wheel lean, steering, articulation, scarifier, front snow plow and side mount wing. Hydraulic lock valves in all circuits to prevent drift. Hydraulic reservoir filled with winter grade oil.

TIRES

17:5R x 25 12 ply tires (Steel Belted Radial) on 14 inch multi piece rims. Michelin Snoplus M&S, L3. Two sets of hardened tire chains.

BRAKES

Four wheel hydraulic activated, oil disc brakes (self adjusting). Hydraulic released park brake.

MISCELLANEOUS

Operator Controlled Differential Lock/Unlock.
Electric back-up alarm. Circle drive slip clutch.
Automatic articulation return to center. Snow wing ready. Adequate wheel clearance for tire chains
Rear draw bar and pin for towing vandalism protection: Cap locks for hydraulic tank, radiator and fuel tanks. Engine and transmission protector plate.
Fire extinguisher mounted in cab. Slow moving vehicle (SMV) sign.
Front steerable fenders & rear fenders must be easily removable (superior fenders or equivalent). Operators, parts, and service manuals (all components engine, transmission, etc.) with CD. Machine monitoring & tracking system supplied at no cost to county for the length of warranty.

Operator controls will be determined after bid is awarded.

ATTACHMENTS

Heavy duty all hydraulic 12 ft. snow wing with city post lift group and push arms (Balderson or equivalent). All functions to be controlled from cab. Controls for wing and V Plow to be in line with other controls. All attachments should be complete, mounted and operational at time of delivery. Bidder should submit manufacturer's literature on snow wing.

COLOR

*MANUFACTURERS STANDARD YELLOW

WARRANTY

Written warranty required for 3 years or three thousand (3000) hours on all parts and labor. 84 month or seventy-five hundred (7500) hours on power train & hydraulics. Scott County shall incur no expense during warranty period. Dealer will be responsible for all service calls, transportation, and supplying loaner machine during warranty period.



One 2020 or newer Caterpillar 140M3 with front wheel assist or John Deere 772G Motor Grader with front wheel assist with trade of:

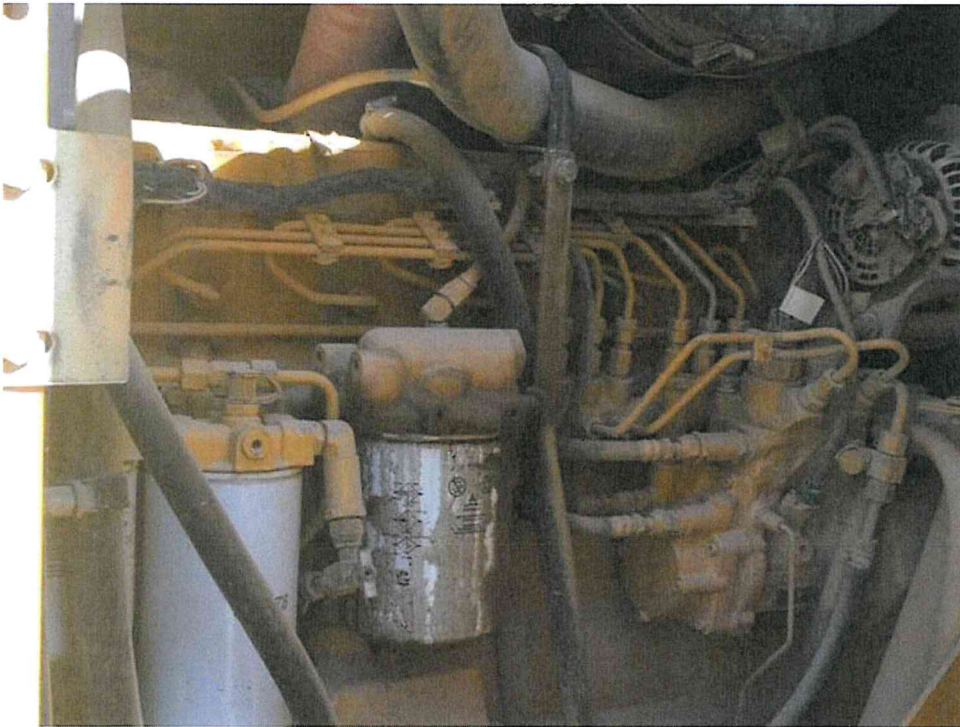
Year	Make	Model	Color	VIN #	Hrs
2008	John Deere	770D	Yellow	DW770D623383	8,520.0

Please call 563-328-4175 (Wayne) for an appointment to view trade.











Trade is located at:

Scott County Secondary Roads

950 East Blackhawk Trail

Eldridge, IA 52748



Quotation

Company Name and Address _____

Contact Information _____

MAKE: _____ **MODEL:** _____ **YEAR:** _____

Please list all exceptions and associated cost not included in the vehicle base price on page 8.

Vehicles Base Price: _____

Exceptions Costs _____

Delivery Costs: _____

Less Trade-In DW770D623383 _____

Total Purchase Price: _____

Delivery Must Be after July 1, 2020.

Scott County of Iowa is tax exempt (42-6004465). Payment terms are net 30 from the date of delivery. The Motor Vehicle Purchase Agreement, Damage Disclosure, Odometer Reading Certificate and the Warranty Contract are to be provided at the time of delivery.

If you have not done business previously with Scott County of Iowa, please include your company's signed 2020 W-9 with the bid submission.

Accept Terms and Conditions Yes___ No___



Exception Items List

EXCEPTION	ALTERNATIVE OPTION